



# INSTALLATION INSTRUCTIONS

Tel: 86.755.86091510 www.senseled.com

## LED Neon Rope

SAVE THESE INSTRUCTIONS AND REFER TO THEM WHEN ADDITIONS TO OR CHANGES IN THE PROJECTS CONFIGURATION ARE MADE.

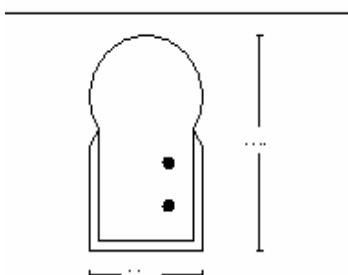
### Specifications



Max Length	
120V	600ft
24V	100ft
Cutting Length 24V	
Red Yellow Amber	4.0in
Blue Green White	3.0in
Cutting Length 120V	
Red Yellow Amber	2.5ft
Blue Green White	1.5ft

Super Bright 5mm						Light Source
Blue	Green	Red	Amber	Yellow	White	Light Color
0.5 in						Led Spacing
4 / ft	9 / ft	4.4 / ft	8.6 / ft	5.42 / ft	7 / ft	Brightness (lumen)
~ 100,000 hours						Life Span
120V AC						Voltage
24 per ft						Number of LEDs
1.2W	1.2W	1.2W	0.96W	1.88W	1.2W	Watts Per Foot
H: 27.5mm x W: 14.5mm						Dimensions
1.5ft	1.5ft	2.5ft	2.5ft	2.5ft	1.5ft	Cutting Unit
600ft						Max Length
Blue						Casing Color
Translucent						Cover Material
PVC						Housing

### Dimension [mm]



### Energy Cost Comparison

Based on 300 feet length for the color Red

Region	Glass Neon	Led Neon	Annual Savings
USA Midwest	\$ 1,839.6	\$ 454.12	\$ 1,385.48
(0.08 \$/kWh)			



# INSTALLATION INSTRUCTIONS

Tel: 86.755.86091510 www.senseled.com

## LED Neon Rope

SAVE THESE INSTRUCTIONS AND REFER TO THEM WHEN ADDITIONS TO OR CHANGES IN THE PROJECTS CONFIGURATION ARE MADE.

### Accessories

1] Power Plug.	9] Screw
2] Transformer [low voltage]	10] L - Connector
3] Power Cord	11] T - Connector
4] Rectifier	12] X - Connector
5] Female Connector	13] Neon Rope
6] Power Male Connecetor	14] End Cap
7] Middle Connector	15] Channel
8] Mounting Clip	

### Installation



1. Cutting Mark

There are marks along the rope indicating where to make cuts.



5. 180° Installation

Use - Clip  
Screws



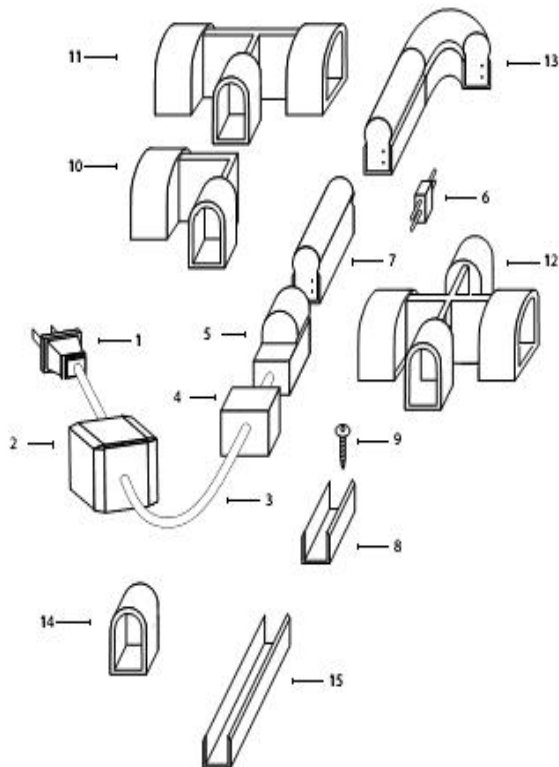
2. Linear Installation

Use - Channel



6. Convex Installation

Use - Clip



3. Curved Installation

Use - Clip  
Screws



7. Concave Installation

Use - Clip



4. 90° Installation

Use - Clip  
Screws



8. Slot Installation

Squeeze rope into desired slot.